

INTEGRATED SOLUTIONS

# YOUR TRUSTED OEM PARTNER

Enhancing your workflows  
through innovation



C50





A leader in dental imaging, ACTEON® applies its 20 years of expertise to serving you and your patients.

ACTEON® is an originator of fluorescence technology for caries detection and continue to develop cutting-edge technologies to provide reliable, effective products that make life easier for practitioners around the world.



*« Busy dental professionals want to maximize the quality of the care they provide. Therefore, it is Acteon's goal to support them at every step of their patients' care with specialized solutions to improve effectiveness, efficiency, and affordability with the clinical outcome in mind. The C50 is a key addition to this overarching concept because we believe that every dental workflow should start and finish with a high-quality digital image. »*

**Michael Rynerson**, CEO Acteon Group



# C50

## Speak your patients' language

The **C50 camera** is a powerful tool for **pathology monitoring, post-treatment and follow up**.

It is a powerful communication tool, helping patients to understand their condition through **clear, striking images**.

It has become a must for **before and after treatment comparisons**, helping to boost productivity by **increasing treatment acceptance rates**.

### Remarkable clinical vision

#### Full HD resolution

high resolution for superior image quality

#### Autofocus

a clear, setting-free image for smooth navigation

#### 4 camera shots available

macrovision, single tooth, smile and portrait



Macrovision



Tooth



Smile



Portrait

Intraoral camera shots

Extraoral camera shots

### Remarkable operational freedom

- **Plug & Play** : ready to use with pre-installed driver
- **Customize settings**: a wide range of settings to suit your needs
- **100% compatible**: Twain & Dicom
- **Supplied with Acteon Imaging Suite**: all its features are packed into a clean and neat user interface that seamlessly integrates all your imaging devices & your PMS

# C50 with Diagnostic-Aid option

## 4 cameras in 1

The **C50 camera with diagnostic-aid option** is the only camera on the market to cover so many pathologies, featuring **4 integrated vision modes** for seamless navigation.

### Remarkable clinical vision

#### Full HD resolution

high resolution for superior image quality

#### Autofocus

a clear, setting-free image for smooth navigation

#### 4 camera shots available

macrovision, single tooth, smile and portrait

### Remarkable clinical versatility



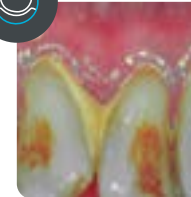
#### DAYLIGHT MODE

Record of **natural colors** for a better interpretation of tooth shade, pathology identification and patient follow-up.



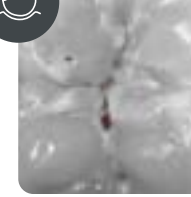
#### DAYLIGHT+ MODE

High contrasts emphasizing anatomic fissures and details of the dentin structure/depth.



#### PERIO MODE

Enhancement of dental plaque and gingival inflammation thanks to chromatic amplification.



#### CARIO MODE

Caries detection by fluorescence technique by LEDs.

### Remarkable operational freedom

- **Vision modes built-in**: switch in a click
- **Plug & Play** : ready to use with pre-installed driver
- **Customize settings**: a wide range of settings to suit your needs
- **100% compatible**: Twain & Dicom
- **Supplied with Acteon Imaging Suite**: all its features are packed into a clean and neat user interface that seamlessly integrates all your imaging devices & your PMS





# A wealth of options

To meet you and your patient's needs, we have developed integration options while considering both your technical and commercial requirements.

**Make the C50 yours and offer your customers a state-of-the-art Full HD camera.**

# 1

Select your camera

# 2

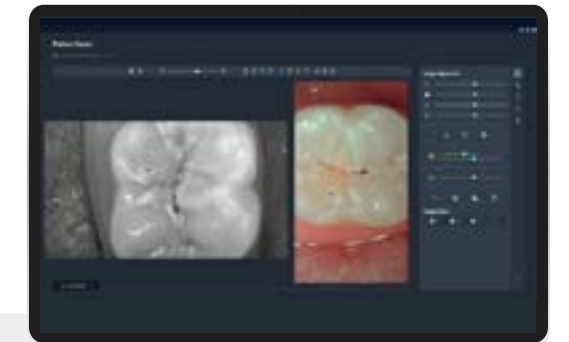
Select your package &  
Customize your camera



## Basic customization package

### ✓ Camera customization

customize your  
product packaging



your color

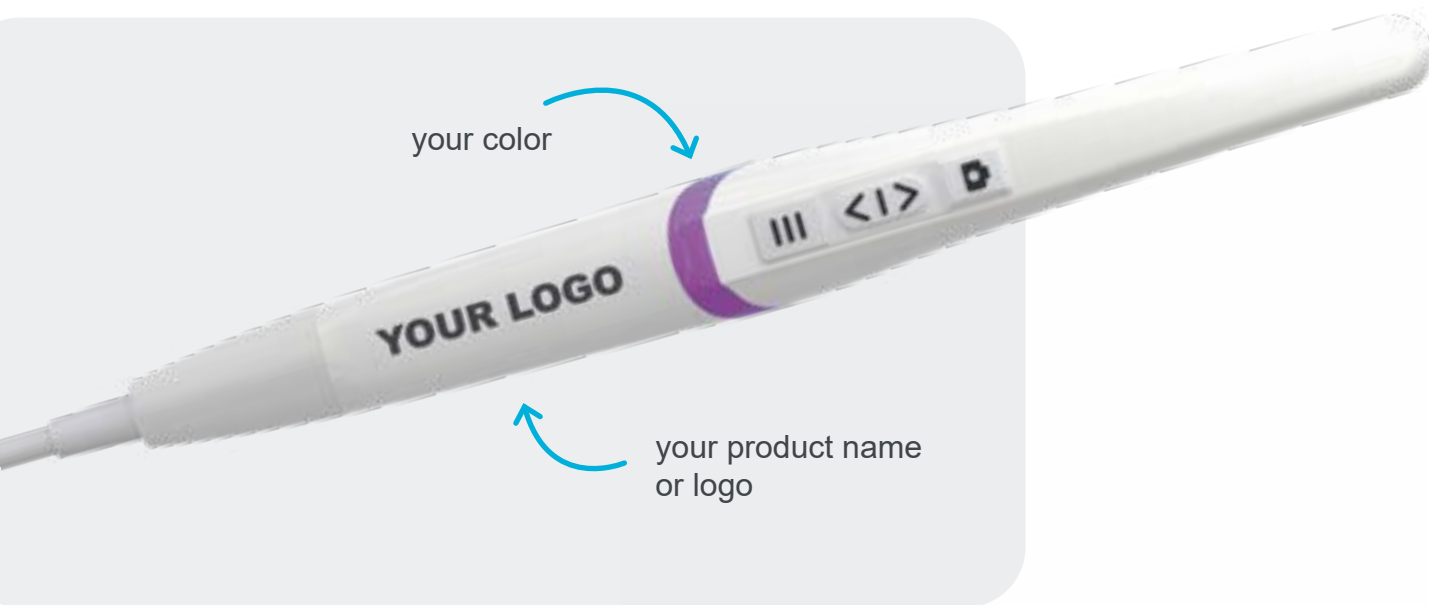
your product name  
or logo

### + Including unbranded accessories

- + Sleeves (x50)
- + Tips (x3) (only for C50 with DA option)
- + Cable (Customizable length)

## Standard customization package

- ✓ Dental chair integration
- ✓ Camera customization

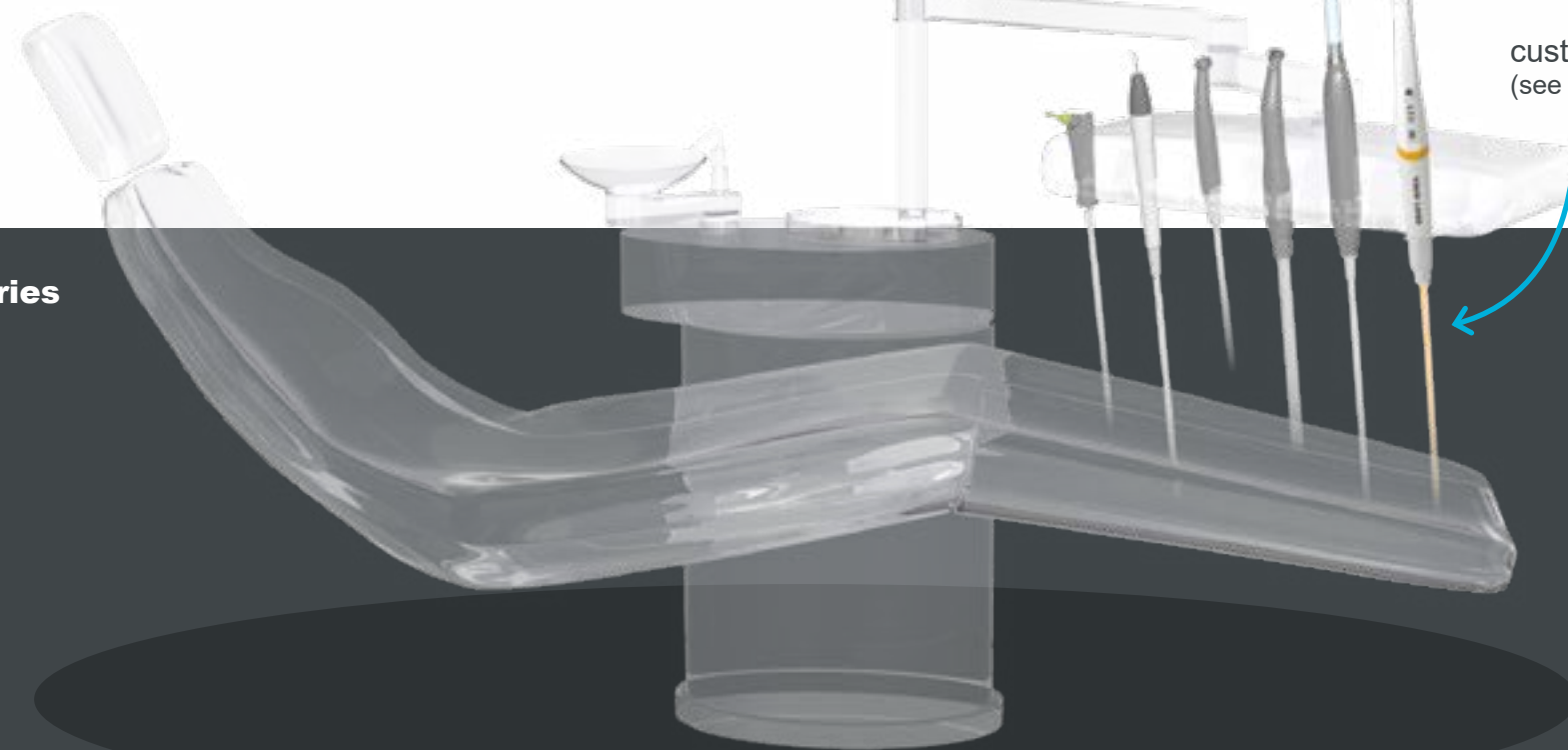


### + Including unbranded accessories

- + Box
- + Sleeves (x50)
- + Tips (x3) (only for C50 with DA option)
- + Cable (Customizable length)
- + Standard protective sheath
- + Standard connector

## Premium customization package

- ✓ Dental chair integration
- ✓ Camera customization
- ✓ Accessories customization



### + Including unbranded accessories

- + Box
- + Sleeves (x50)
- + Tips (x3) (only for C50 with DA option)
- + Cable (Customizable length)

## Camera specifications

<b>Sensor</b>	CMOS
<b>Resolution</b>	1920 x 1080px
<b>Sensitivity</b>	2 lux
<b>Frame per second (FPS)</b>	25 – 30
<b>Aspect ratio</b>	16/9
<b>Lighting</b>	6 white LEDs and 2 blue LEDs
<b>Focus adjustment</b>	Automatic focus or Single focus
<b>4 Visions mode</b>	DAYLIGHT mode If option enabled: DAYLIGHT+ mode, PERIO mode and CARIO mode
<b>Depth of field</b>	From portrait to macro
<b>Image capture</b>	Capture button or footswitch (optional)
<b>Angle of view</b>	75°
<b>Cable length</b>	3m
<b>USB output</b>	3.0
<b>Consumption</b>	4.5W max
<b>Handpiece dimensions</b>	L: 200; W: 30; H: 24mm
<b>Handpiece weight</b>	100g
<b>International Protection Marking (IP)</b>	Dust & waterproofness protection IP53

## Computer Configuration Requirements

Computer requirements	Specs
<b>CPU</b>	Intel Core i5 4 core 2GHz Gen 8 or greater and Apple M1 or greater
<b>RAM</b>	8GB
<b>USB version</b>	3.0 or greater
<b>USB chipset</b>	Intel or Renesas
<b>Operating system</b>	from Windows 10 PRO 64 bits or macOS Catalina

Class I medical device for dental care. CE. For professional dental use only.  
This medical device is not refunded by health insurance organizations. Read carefully the instructions before use.  
Manufacturer: Sopro® ACTEON® Group (France)





## **SOPRO**

A company of ACTEON® Group

**ZAC Athélia IV,  
avenue des Genévriers,  
13705 LA CIOTAT, France**

**Tel. +33 (0) 442 980 101  
Fax. +33 (0) 442 717 690**

**[info@acteongroup.com](mailto:info@acteongroup.com)**

Follow-us

